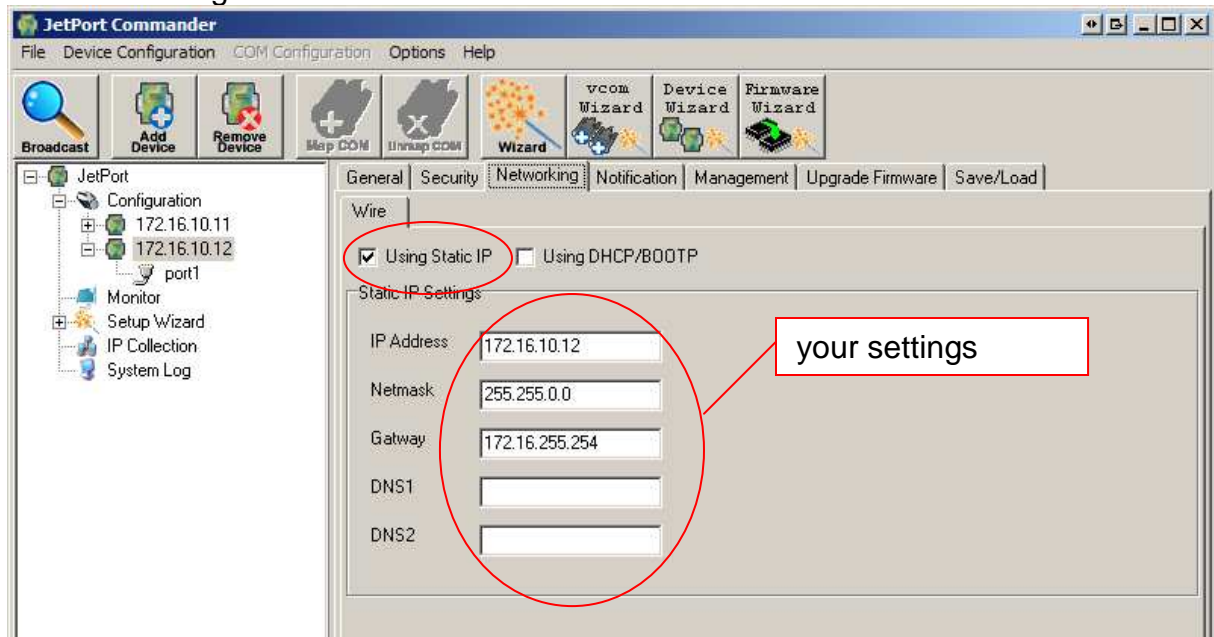
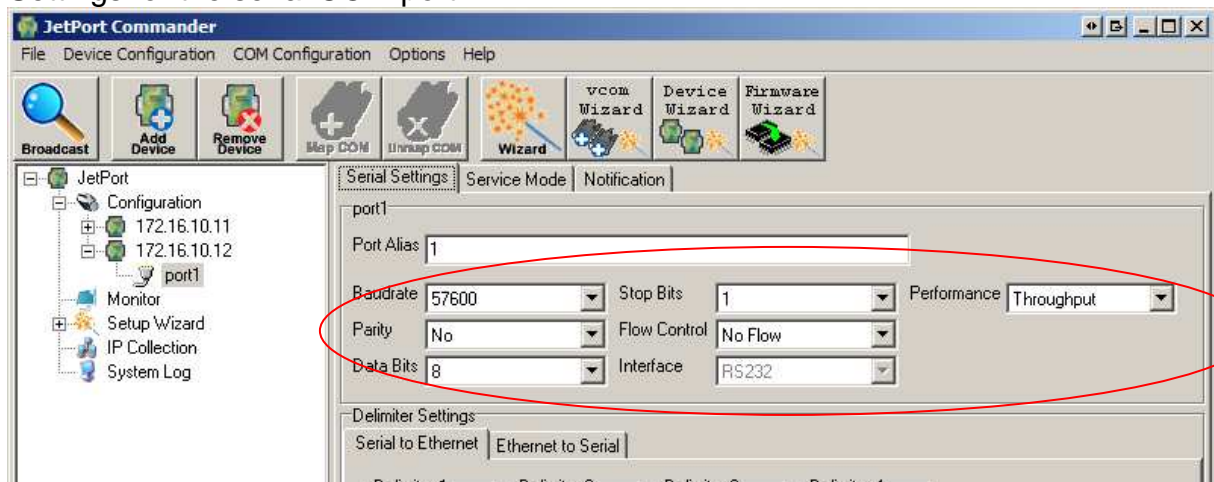


Configuration using JetPORT-Commander:

Network settings for the JetPORT



Settings for the serial COM port



Settings for "Serial to Ethernet" connection

Delimiter Settings

Serial to Ethernet | Ethernet to Serial

Delimiter 1: 0 (HEX) Enabled

Delimiter 2: 0 (HEX) Enabled

Delimiter 3: 0 (HEX) Enabled

Delimiter 4: 0 (HEX) Enabled

Flush Serial to Ethernet Data Buffer After: 0 (0-65535) ms

The received data will be queueing in the buffer until all the delimiters are matched. When the buffer is full (4K Bytes) or after "flush S2E data buffer" timeout, the data will also be sent.

Force TX interval time: 0 (0-65535) ms data 1 interval time data 2 interval time data 3

The received data will be queueing in TX buffer until TX interval time is timeout or TX buffer is full (4K Bytes) , the data will also be sent. 0 is disable.

Refresh Apply Only Apply and Save

Settings for "Ethernet to Serial"

Delimiter Settings

Serial to Ethernet | Ethernet to Serial

Delimiter 1: 0 (HEX) Enabled

Delimiter 2: 0 (HEX) Enabled

Delimiter 3: 0 (HEX) Enabled

Delimiter 4: 0 (HEX) Enabled

Flush Ethernet to Serial Data Buffer After: 0 (0-65535) ms

The received data will be queueing in the buffer until all the delimiters are matched. When the buffer is full (4K Bytes) or after "flush E2S data buffer" timeout, the data will also be sent.

Force TX interval time: 0 (0-65535) ms data 1 interval time data 2 interval time data 3

The received data will be queueing in TX buffer until TX interval time is timeout or TX buffer is full (4K Bytes) , the data will also be sent. 0 is disable.

Refresh Apply Only Apply and Save

Settings for „Service-Mode“

JetPort Commander

File Device Configuration COM Configuration Options Help

Broadcast Add Device Remove Device Map COM Unmap COM Wizard vcom Wizard Device Wizard Firmware Wizard

JetPort

- Configuration
 - 172.16.10.11
 - 172.16.10.12
- Monitor
- Setup Wizard
- IP Collection
- System Log

Serial Settings | Service Mode | Notification

port1

Service Mode: TCP Server Mode

TCP Server Mode

TCP Server Settings

Data Port: 4010 Auto Scan

Control Port: 4011

Misc.

Idle Timeout: 0 (0-65535) Seconds

Alive Check: 420 (0-65535) Seconds

Multilink

Will be used in „Visualisierung 3200“!!

Connection settings of the „Visualisierung 3200“ with the JetPORT configured above

The screenshot shows a dialog box titled "Verbindung" with a subtitle "Regelungstyp und Verbindungsart einstellen". Below the subtitle is the text "Verbindungseinstellungen für die gewünschte Regelung und Verbindungsart treffen". The dialog contains several configuration fields:

- Sprache: Deutsch (dropdown)
- Regelungstyp: S / H / P 3200 (dropdown)
- Verbindungsart: Seriell->Ethernet (dropdown)
- auf Paketempfang warten
- E/A Aktualisierung: 2.0 s (spin box)
- Verbindungs Time Out: 120 s (spin box)
- Serieller Anschluss: COM1 (dropdown)
- Übertragungsrate: 57600 (dropdown)
- Telefonnummer: (empty text box)
- IP-Adresse / Host: 172.16.10.12 (max. 64) (text box)
- IP-Portnummer: 4010_ (text box)

At the bottom of the dialog are two buttons: "OK" and "Abbrechen". A red circle highlights the IP-Adresse / Host field, and a red arrow points from a box containing the text "Your JetPORT settings" to this field.