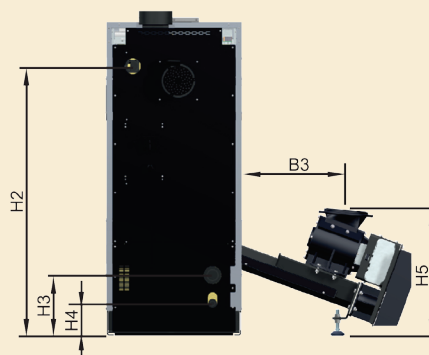
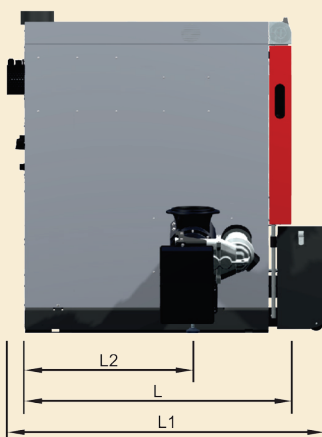
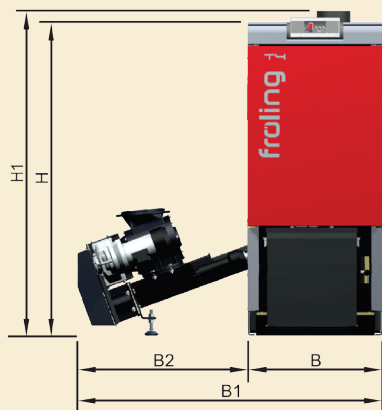


fröling T4

Wood Chip or Pellet Boiler

- For commercial or Institutional use
- Low maintenance design
- Fully automatic
- Wide range of fuel feed systems
- ASME stamped pressure vessel

- 1 Durable high-temperature silicon carbide combustion chamber for effective combustion resulting in high efficiency and very low emissions.
- 2 Multi-part combustion grate consisting of a fixed insertion zone and the automatic tipping grate for cleaning away ash and foreign bodies.
- 3 Automatic ash removal from the combustion chamber and the heat exchanger to the generously-sized mobile ash container.
- 4 Induced draft combustion air supply for primary and secondary air.
- 5 Stoker screw with coupled rotary valve for optimal fuel supply and maximum safety.
- 6 3-pass heat exchanger with Efficiency Optimisation System-EOS (turbulators for automatic cleaning of the heat exchanger pipes).
- 7 Speed-controlled induced-draught fan with function monitor for maximum operational reliability.
- 8 Lambdatronic H 3200 controller with innovative bus technology for complete system solutions. New boiler console with 4.3" touch display for simple, intuitive operation and free access to Fröling connect monitoring software.
- 9 Fully insulated jacket to minimize radiant heat loss.
- 10 Broadband Lambda probe for automatic adjustment to different fuel qualities.
- 11 Energy-saving drives with spur gears for extremely low power consumption.



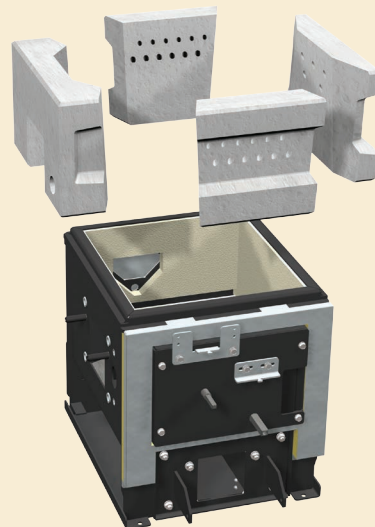
Dimension Data

H	Height of boiler	inches	67 ³ / ₄
H1	Total height (incl. flue connector)	inches	69 ¹ / ₆
H2	Height, supply connection	inches	60 ⁵ / ₈
H3	Height, return connection	inches	7 ⁷ / ₈
H4	Height, drain connection	inches	5 ¹ / ₂
H5	Height, rotary valve connection	inches	25 ⁵ / ₈
B	Width of boiler	inches	34 ¹ / ₆
B1	Total width with stoker unit	inches	64 ¹⁵ / ₁₆
B2	Width, stoker unit	inches	29 ¹⁵ / ₁₆
B3	Distance boiler to stoker connection	inches	18 ¹ / ₂
L	Length, boiler	inches	75
L1	Total length (incl. ash container and fan)	inches	90 ¹ / ₂
L2	Distance boiler backside to stoker center	inches	51 ³ / ₈
Flue Collar Diameter		inches	8

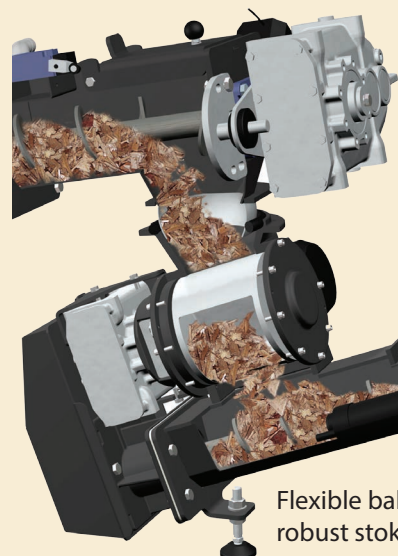
Performance Data

		130	150
Rated heat output	BTU/hr	443,000	512,000
Heating efficiency range	BTU/hr	133,000-443,000	153,000-512,000
Electrical Connection		240 V 60Hz, 20 Amp Circuit	
Electrical Consumption	Watts	110-262	110-262
Boiler Weight	pounds	3858	3858
Water Capacity	gallons	90	90
Minimum Return Temp.	°F	113	113
Max. Operating Temp.	°F	194	194
ECM Pump Control		Yes	Yes
Permitted Fuel		Wood Pellets Ø ¼" (6mm) Wood Chips ½" X 2", <30% Moisture	

Dimensions are subject to technical alterations.



High-temperature silicon carbide combustion chamber



Flexible ball joint and robust stoker unit