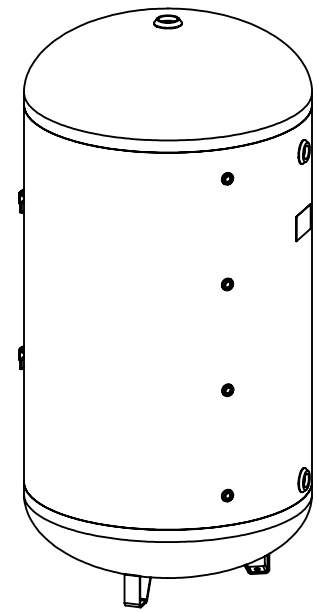
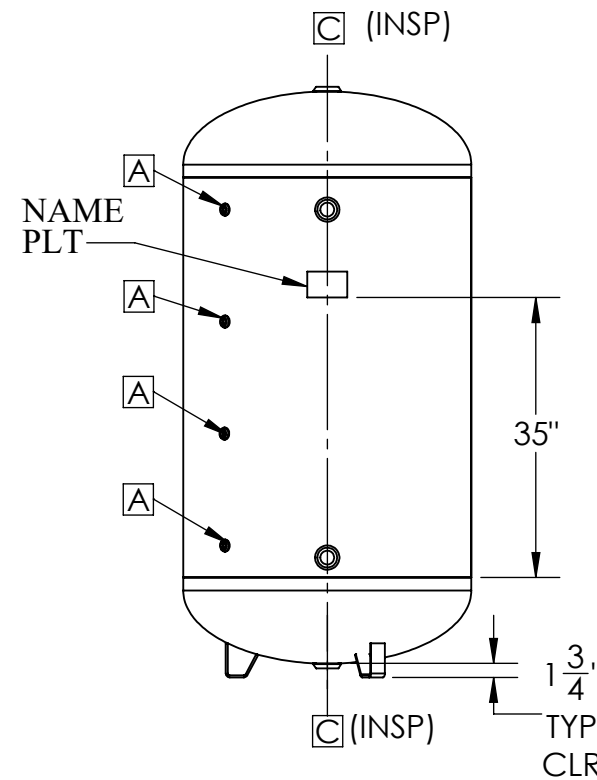
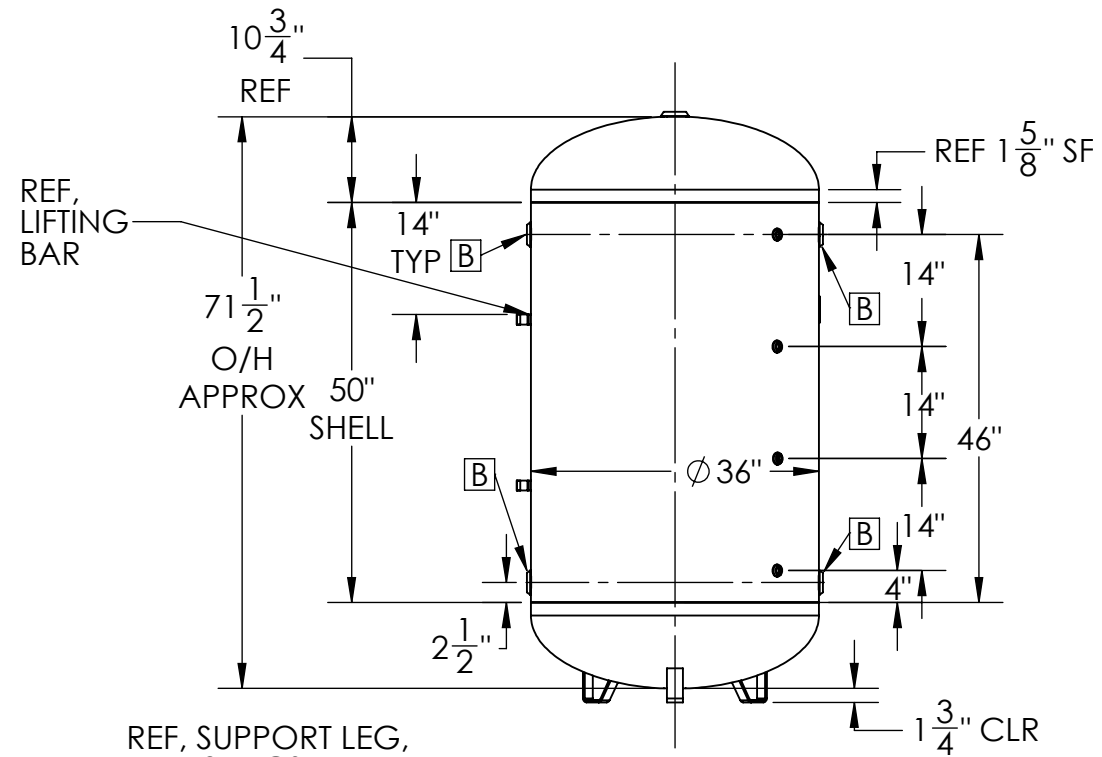
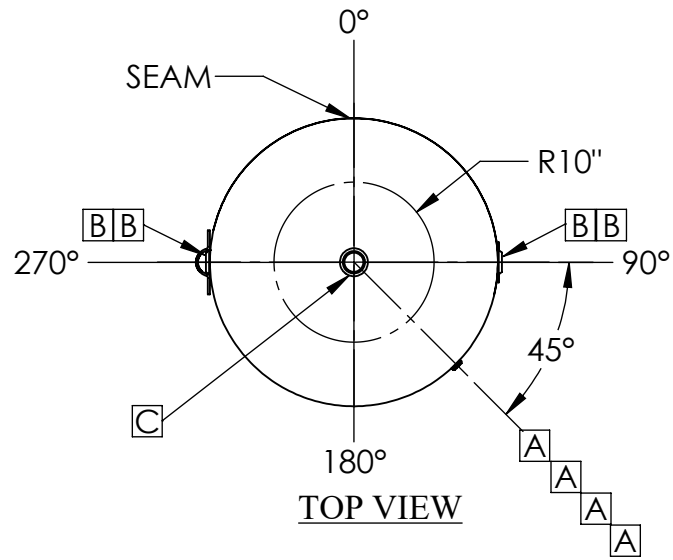


NOTES:

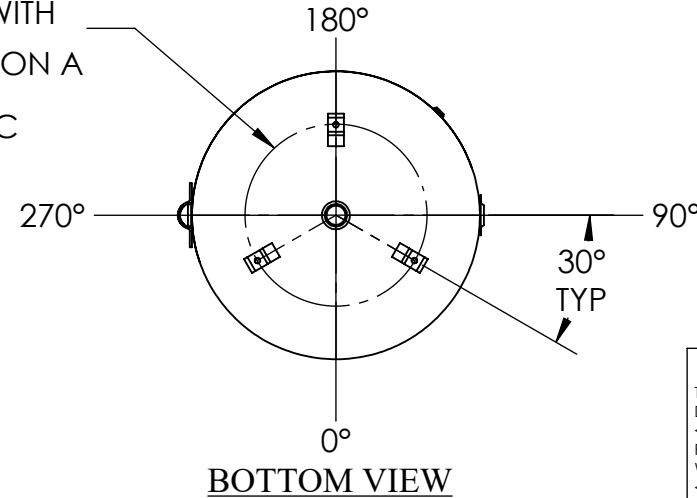
- MAWP (INTERNAL DESIGN PRESS.): 125 PSIG AT 500°F
MAWP (EXTERNAL PRESS.): ∅
MDMT: -20°F AT 125 PSIG
TEST PRESSURE: 163 PSIG HYDRO
EXTERNAL FINISH: PRIME (SPEC QA-01-005)
INTERNAL FINISH: PLAIN
- TOLERANCE TO BE PER JW DWG #STD SP-103 UNLESS OTHERWISE NOTED.
- VESSEL TO BE FABRICATED & STAMPED PER ASME SECT VIII, DIV 1, LATEST EDITION
- EST WT: 465 LBS EMPTY, CAP: 300 GAL NOM

ID	SIZE	RATING	CONN. TYPE	SERVICE
A	1/2"	350#	BOSS, NPT	CUSTOMER CONN.
B	1 1/2"	350#	BOSS, NPT	CUSTOMER CONN.
C	2"	350#	BOSS, NPT	CUSTOMER CONN.



3D VIEW

REF, SUPPORT LEG, TYP 3 PLCS, WITH 1 1/16" Ø HOLE ON A 22 3/4" Ø BC



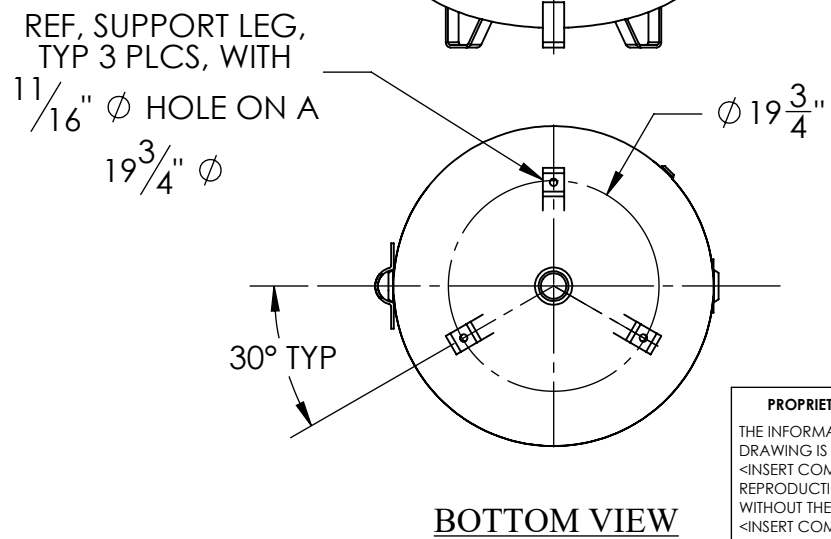
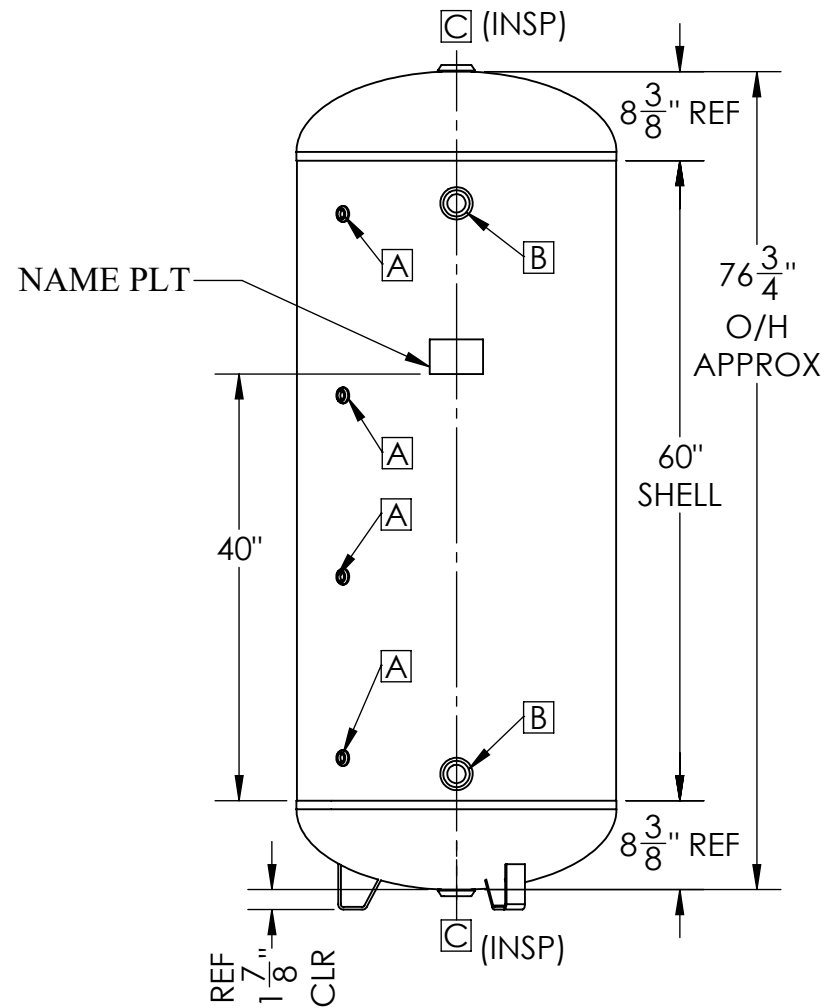
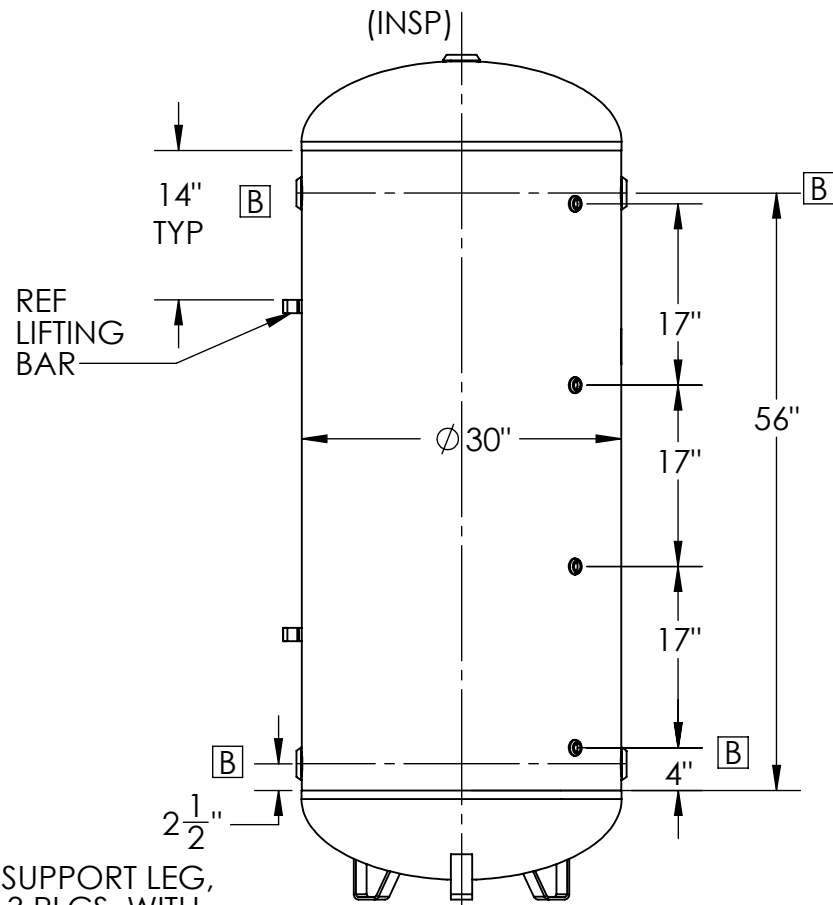
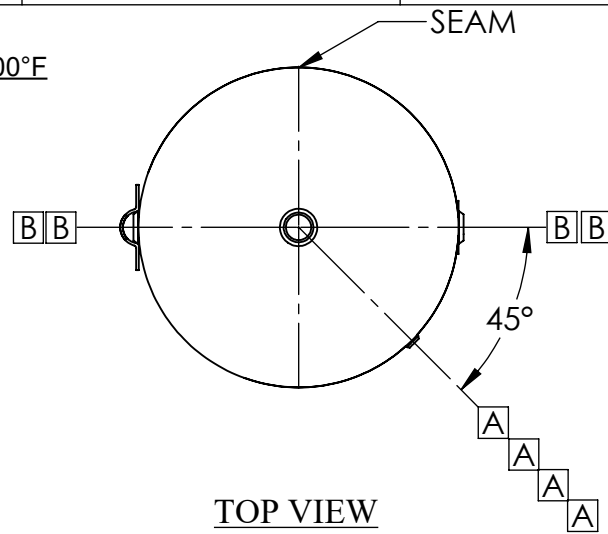
BOTTOM VIEW

PROPRIETARY AND CONFIDENTIAL
THE INFORMATION CONTAINED IN THIS DRAWING IS THE SOLE PROPERTY OF <INSERT COMPANY NAME HERE>. ANY REPRODUCTION IN PART OR AS A WHOLE WITHOUT THE WRITTEN PERMISSION OF <INSERT COMPANY NAME HERE> IS PROHIBITED.

UNLESS OTHERWISE SPECIFIED:		NAME	DATE	THE JOHN WOOD COMPANY	
DIMENSIONS ARE IN INCHES		DRAWN	S.R.	5/15/18	TITLE: 36" DIA ASME VERTICAL PRIMED STORAGE TANK
TOLERANCES:		CHECKED			
FRACTIONAL ±		ENG APPR.			
ANGULAR: MACH ± BEND ±		MFG APPR.			
TWO PLACE DECIMAL ±		Q.A.			SIZE DWG. NO. REV B TARR-24-009 C
THREE PLACE DECIMAL ±		COMMENTS:			
INTERPRET GEOMETRIC TOLERANCING PER:				SCALE: 1:12	WEIGHT:
MATERIAL				SHEET 1 OF 2	
FINISH					
DO NOT SCALE DRAWING					

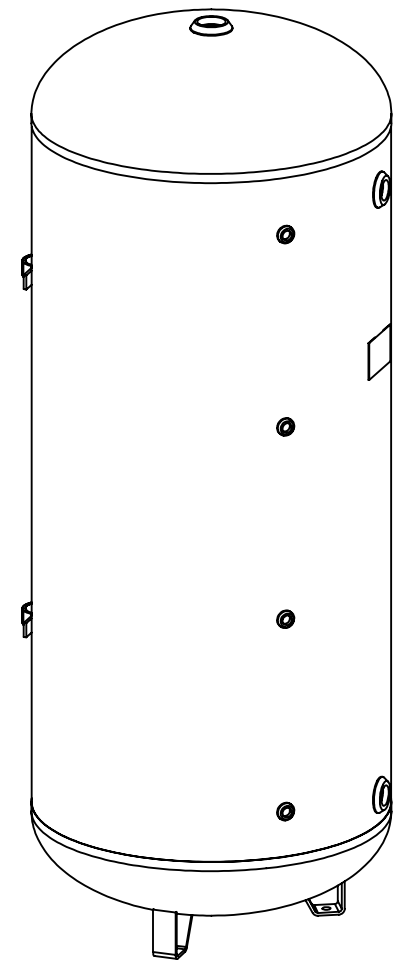
NOTES:

- MAWP (INTERNAL DESIGN PRESS.): 125 PSIG AT 500°F
MAWP (EXTERNAL PRESS.): ∞
MDMT: -20°F AT 125 PSIG
TEST PRESSURE: 163 PSIG HYDRO
EXTERNAL FINISH: PRIME (SPEC QA-01-005)
INTERNAL FINISH: PLAIN
SHELL: SA-414G
HEAD: SA-414G
- TOLERANCE TO BE PER JW DWG #STD SP-103 UNLESS OTHERWISE NOTED.
- VESSEL TO BE FABRICATED & STAMPED PER ASME SECT VIII, DIV 1, LATEST EDITION
- EST WT: 345 LBS EMPTY; CAP: 220 GAL NOM.



PROPRIETARY AND CONFIDENTIAL
THE INFORMATION CONTAINED IN THIS DRAWING IS THE SOLE PROPERTY OF <INSERT COMPANY NAME HERE>. ANY REPRODUCTION IN PART OR AS A WHOLE WITHOUT THE WRITTEN PERMISSION OF <INSERT COMPANY NAME HERE> IS PROHIBITED.

ID	SIZE	RATING	CONN. TYPE	SERVICE
A	1/2"	350#	BOSS, NPT	CUSTOMER CONN.
B	1 1/2"	350#	BOSS, NPT	CUSTOMER CONN.
C	2"	350#	BOSS, NPT	CUSTOMER CONN.



		UNLESS OTHERWISE SPECIFIED:		NAME		DATE		THE JOHN WOOD COMPANY	
		DIMENSIONS ARE IN INCHES		DRAWN		S.R.		5/15/18	
		TOLERANCES:		CHECKED				TITLE:	
		FRACTIONAL ±		ENG APPR.				30" DIA ASME VERTICAL PRIMED STORAGE TANK	
		ANGULAR: MACH ± BEND ±		MFG APPR.				SIZE	
		TWO PLACE DECIMAL ±		Q.A.				DWG. NO.	
		THREE PLACE DECIMAL ±		COMMENTS:				REV	
		INTERPRET GEOMETRIC TOLERANCING PER:						B	
		MATERIAL						TARR-22-006	
		FINISH						B	
NEXT ASSY		USED ON						SCALE: 1:12	
APPLICATION		DO NOT SCALE DRAWING						WEIGHT:	
								SHEET 1 OF 1	