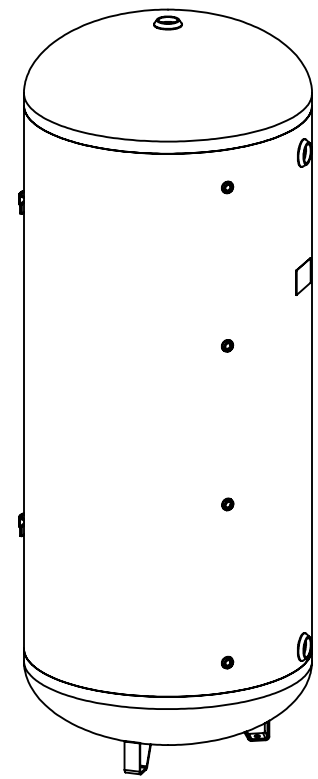
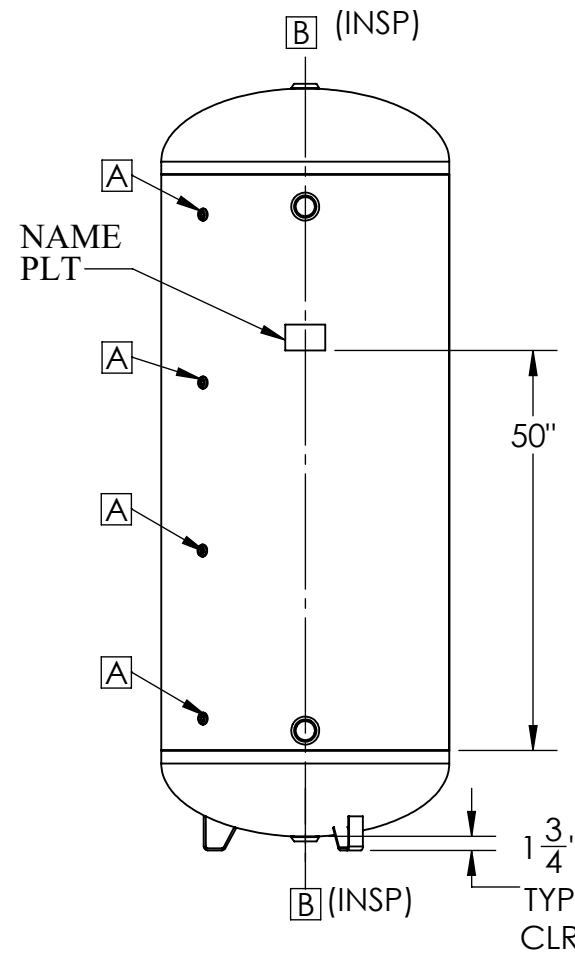
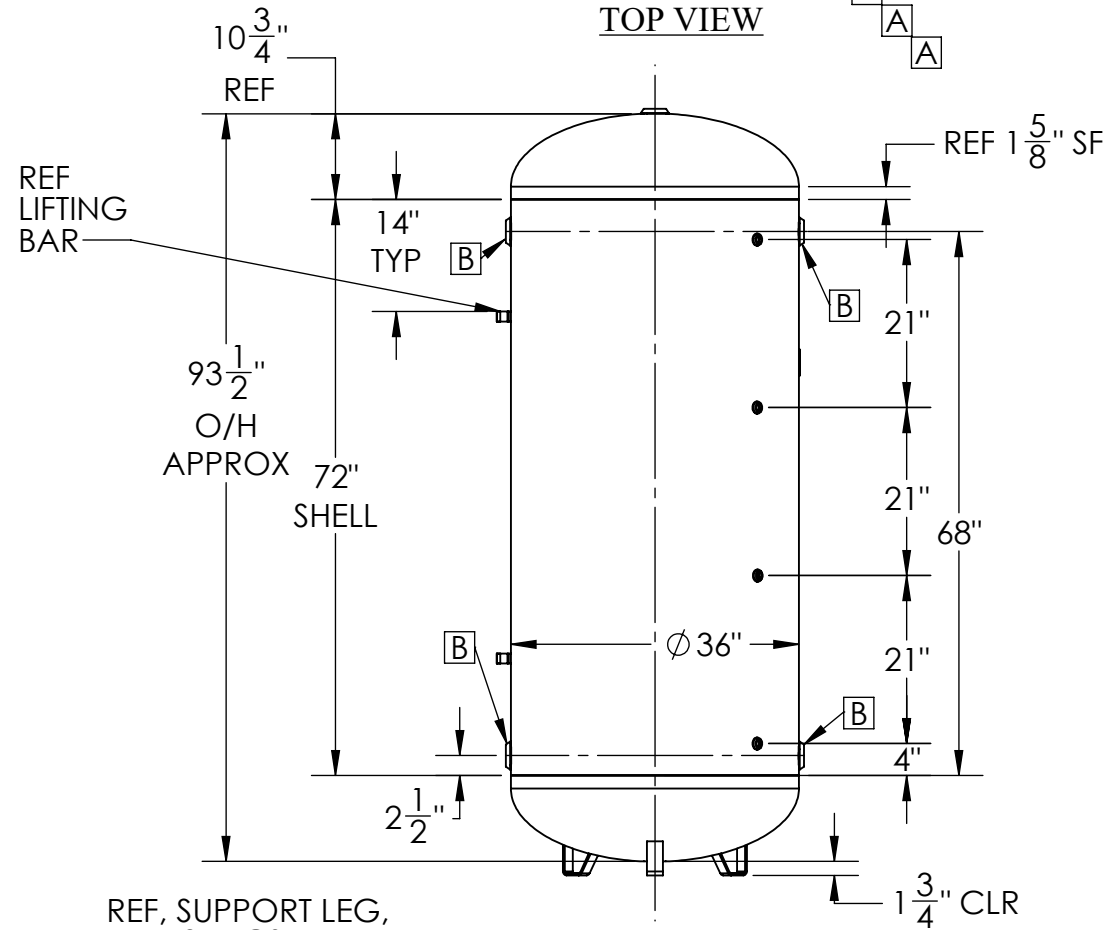
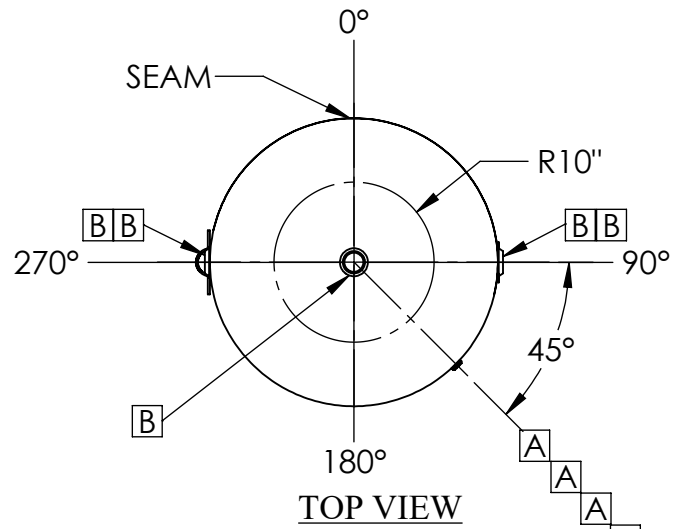


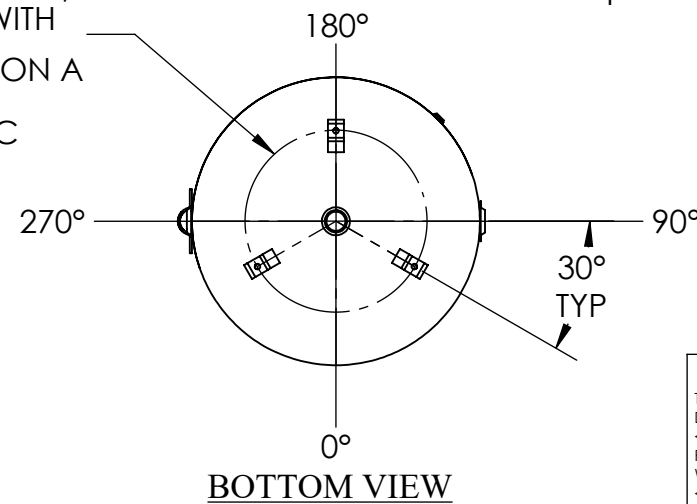
**NOTES:**

- MAWP (INTERNAL DESIGN PRESS.): 125 PSIG AT 500°F  
MAWP (EXTERNAL PRESS.): ∞  
MDMT: -20°F AT 125 PSIG  
TEST PRESSURE: 163 PSIG HYDRO  
EXTERNAL FINISH: PRIME (SPEC QA-01-005)  
INTERNAL FINISH: PLAIN
- TOLERANCE TO BE PER JW DWG #STD SP-103 UNLESS OTHERWISE NOTED.
- VESSEL TO BE FABRICATED & STAMPED PER ASME SECT VIII, DIV 1, LATEST EDITION
- EST WT: 600 LBS EMPTY, CAP: 400 GAL NOM

ID	SIZE	RATING	CONN. TYPE	SERVICE
A	1/2"	350#	BOSS, NPT	CUSTOMER CONN.
B	2"	350#	BOSS, NPT	CUSTOMER CONN.



REF, SUPPORT LEG, TYP 3 PLCS, WITH 1 1/16" Ø HOLE ON A 22 3/4" Ø BC



**3D VIEW**

**PROPRIETARY AND CONFIDENTIAL**  
THE INFORMATION CONTAINED IN THIS DRAWING IS THE SOLE PROPERTY OF <INSERT COMPANY NAME HERE>. ANY REPRODUCTION IN PART OR AS A WHOLE WITHOUT THE WRITTEN PERMISSION OF <INSERT COMPANY NAME HERE> IS PROHIBITED.

UNLESS OTHERWISE SPECIFIED:		NAME	DATE
DIMENSIONS ARE IN INCHES		DRAWN	S.R.
TOLERANCES:		CHECKED	5/15/18
FRACTIONAL ±		ENG APPR.	
ANGULAR: MACH ± BEND ±		MFG APPR.	
TWO PLACE DECIMAL ±		Q.A.	
THREE PLACE DECIMAL ±		COMMENTS:	
INTERPRET GEOMETRIC TOLERANCING PER:			
MATERIAL			
FINISH			
DO NOT SCALE DRAWING			

THE JOHN WOOD COMPANY	
TITLE:	
36" DIA ASME VERTICAL PRIMED STORAGE TANK	
SIZE	DWG. NO.
<b>B</b>	TARR-24-011
REV	C
SCALE: 1:12	WEIGHT:
SHEET 1 OF 2	