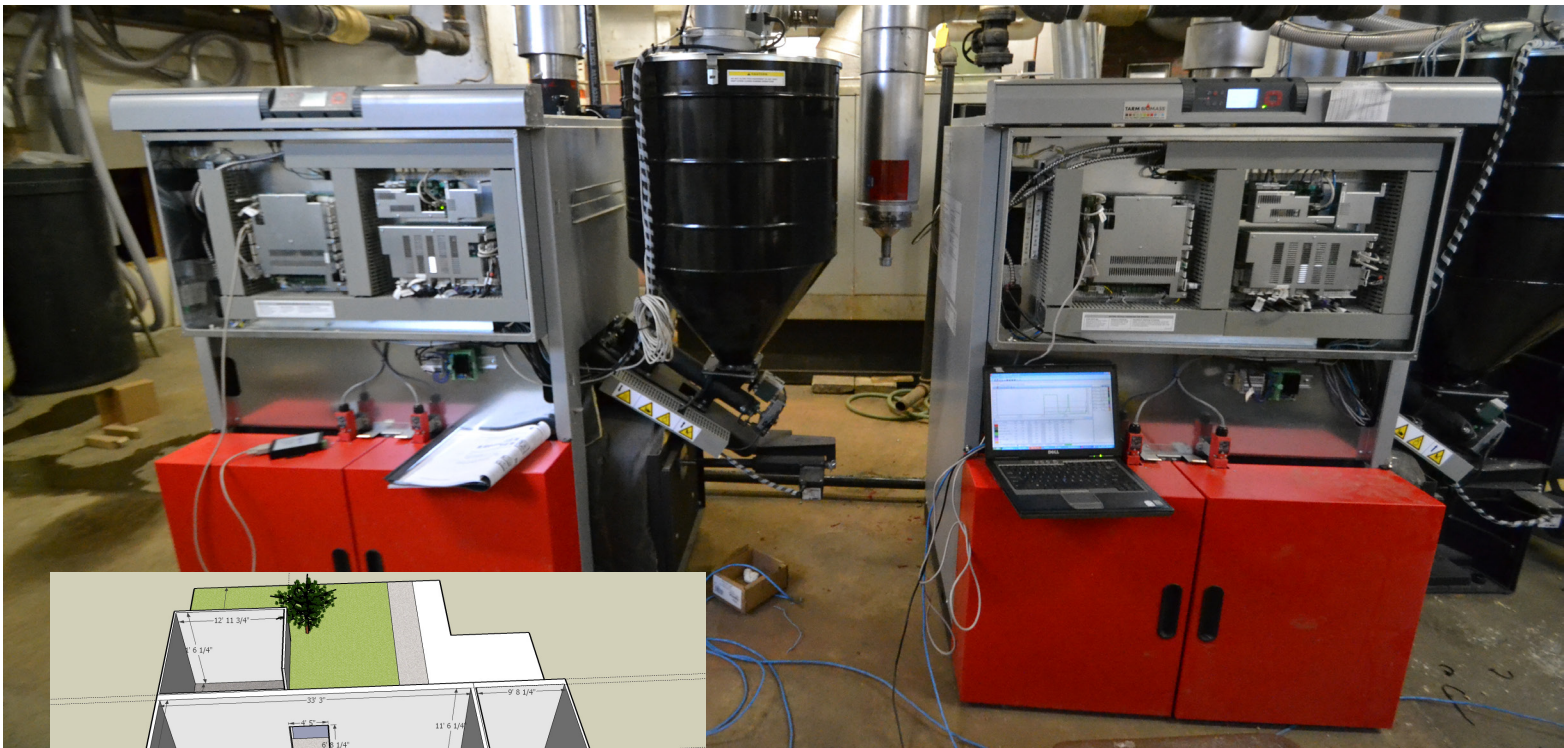


# Wood Pellet Boilers Project Summary

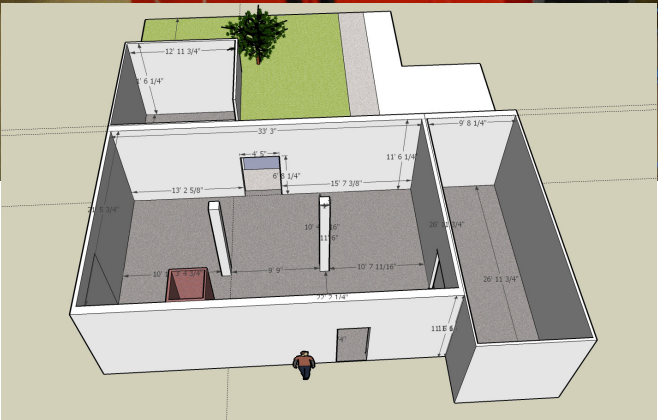


*Improving the way you live  
with renewable heating!*

Wallowa Resources, Enterprise, OR



Two Fröling P4 48/60 during commissioning



Boiler Room Layout

## Summary:

Site	Wallowa Resource Stewardship Center
Application	Updated community hospital (approx 60,000 sq. ft.) that now serves as office space.
Renewable Option	Install two pellet boilers (400,000Btu/hr) to meet 85% of their heating needs. Internal fuel store room (260 sq. ft.) and 400 gallon storage tank.
Boiler Type	Two Fröling P4 60 kW pellet boilers.
Solution	Offsetting 20,000 gallons of heating oil annually. Fuel dollars retained locally: \$40,000.00/yr
Installer	Cook and Emele Heating Service 3375 K Street Baker City, OR 97814

Tarm Biomass | 800.782.9927 | [www.pelletboiler.com](http://www.pelletboiler.com)